



Spectrum Glass

The Nature of Art Glass

Unlike common window glass, which is perfectly smooth and flawless, art glass seeks visual character through aesthetic “imperfections.” These characteristics mimic the handmade sheet glass of centuries past. They come in the form of textural waves and striations, random bubbles and a variety of other natural effects. Art glass achieves its personality through these peculiarities, and no two sheets are ever identical.

General Specifications:

Sheet Size: Standard glass sheets measure 24 x 48 inches (61 x 122 cm). *Waterglass®* sheets vary in width from 19 to 21 inches (48-53 cm). Custom length sheets are available on special order.

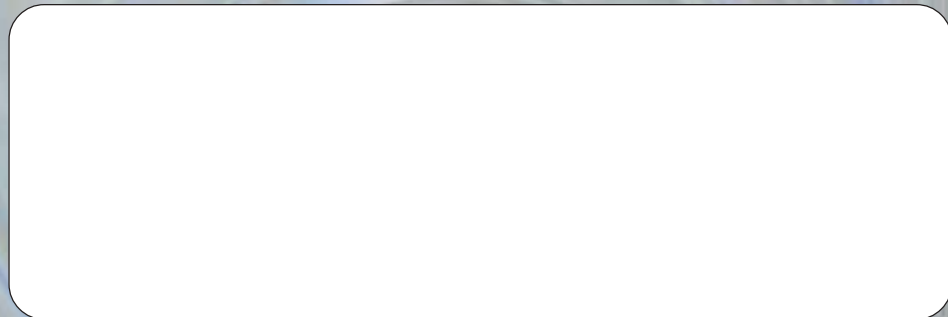
Glass Thickness: Most products are approximately 1/8 inch (about 3 mm) thick. Intentional thick-thin variation occurs in textured products like *Waterglass®*, *Baroque™*, and *Ripple*.

Glass Weight: Glass alone weighs approximately 1.6 Lbs./sq. ft. (7.76 K/sq. M)

Spectrum glass is available from a select family of wholesale and retail suppliers worldwide. Ask your supplier or contact Spectrum for a complete sample box of Spectrum products.

Visit us at www.SpectrumGlass.com for complete and current information on products, policies and programs.

Spectrum®, Waterglass® and Artique® are registered trademarks of Spectrum Glass Company, Inc. *Baroque™* is a trademark of Spectrum Glass Company.



Spectrum Glass Company, Inc.
P.O. Box 646, Woodinville, WA USA 98072-0646
Phone: (425) 483-6699 • Fax: (425) 483-9007
Email: artglass@SpectrumGlass.com
Website: www.SpectrumGlass.com



▲ BR/CLEAR*
Clear on Clear



▲ BR/130.8
Clear on Pale Blue



▲ BR/430
Dark Blue on Clear



▲ BR/BURGUNDY
Deep Burgundy on Clear



▲ BR/PALE GRAY
Clear on Gray



▲ BR/6091-1
Champagne / Clear / White



▲ BR/STEEL
Steel Blue on Clear



▲ BR/400*
Black on Clear



▲ BR/CINNAMON
Cinnamon on Clear



▲ BR/AMETHYST
Light Purple on Clear



▲ BR/TEAL
Teal Green on Clear



▲ BR/6000
Black / Clear / White



▲ BR/CHAMPAGNE
Champagne on Clear



▲ BR/604-1
Purple / Clear / White



▲ BR/602-6
Green / Clear / White



▲ BR/308
White on Clear

Spectrum Baroque™ is a modern version of hand-blown “reamy” antique glass. By slowly stirring together glasses of carefully mismatched compositions, we create a “conflict” that manifests in a dimensional swirling texture and vivid color contrast.

Dynamic and artful, the Baroque texture is unique among art glasses and available exclusively from Spectrum.

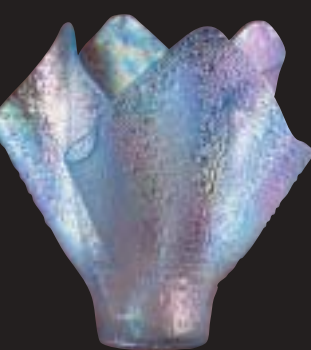
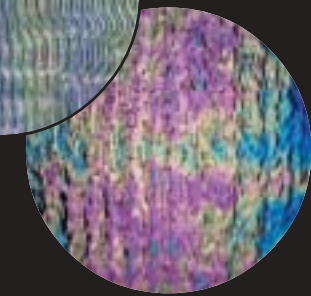


These are the products of Spectrum Glass Company, Inc., manufacturers of specialty sheet glass for lighting, architecture and the stained glass arts. With a unique combination of traditional hand-crafted methods and modern glass making technology, Spectrum produces a modern art glass that has set new standards for quality and consistency.

One of the intriguing fascinations of art glass is

its ever-changing appearance in varying light conditions. These photographs were taken using a careful combination of both reflected and transmitted color-corrected lighting. Printed materials can never be perfectly representative of glass color, nor can they accurately depict light transmission. Complete sets of actual glass samples are available from Spectrum or from your art glass supplier.

* Throughout this catalog, items with an asterisk (*) indicate that the product is also available with an Iridescent surface coating.



Many Spectrum glasses ▶ are currently available with an Iridescent surface. At temperatures upwards of 1000 degrees, we flash-fire a remarkably uniform, micro-thin layer of metallic crystal to the glass surface, creating a radiant exhibition of jewel-like color across the sheet. Spectrum Iridescent is vintage Mother of Pearl, an art glass favorite since the turn of the century.

Baroque™

Iridescent





Wispy Opalescents are composed of about 3/4 cathedral glass color and about 1/4 opaque white glass. The white opal is hand-ladled into a moving stream of cathedral color. The two glasses are then stirred together, by hand, just before the sheet is formed.

In the finished sheet, wisps of opal display as both surface variegation and internal shadowing, generating reflection and depth.

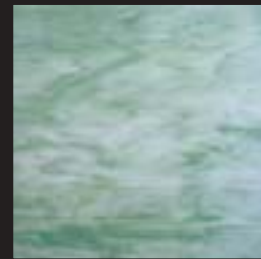
Opalescent *Wispy*



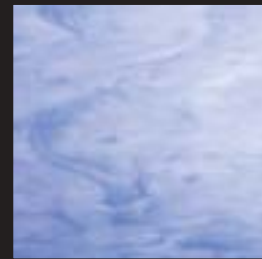
▲ 891-61S*
Champagne



▲ 365-1S
Yellow



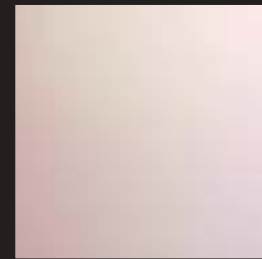
▲ 828-52S
Sea Green



▲ 335-2S
Light Blue



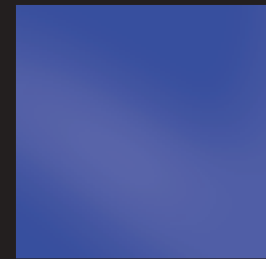
▲ 833-51S
Sky Blue



▲ 291-61S
Pure Champagne



▲ 200S*
Pure White



▲ 230-76S
Dark Blue



▲ 305S*
Clear Pearl



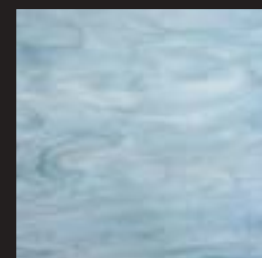
▲ 375-1S
Light Orange



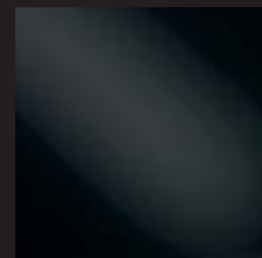
▲ 325-2S
Light Green



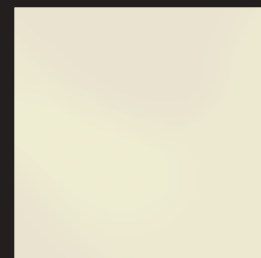
▲ 335-6S
Cobalt Blue



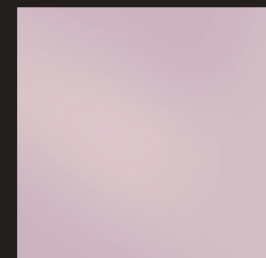
▲ 838-52S
Colonial Blue



▲ 1009S
Black



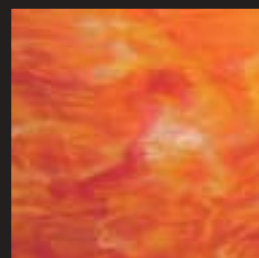
▲ 210-71S
Ivory



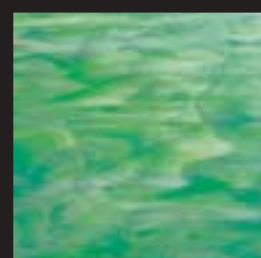
▲ 240-72S
Mauve



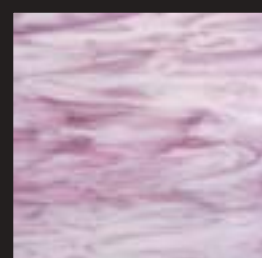
▲ 315-02S
Pale Amber



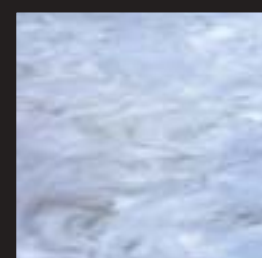
▲ 675-5S
Orange Red



▲ 325-6S
Emerald



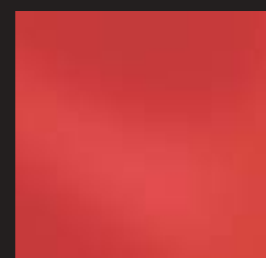
▲ 345-2S
Light Purple



▲ 385-2S
Medium Gray



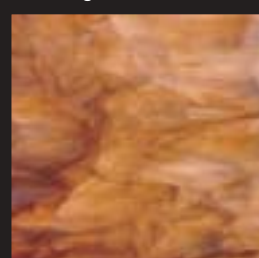
▲ 215-72S
Adobe



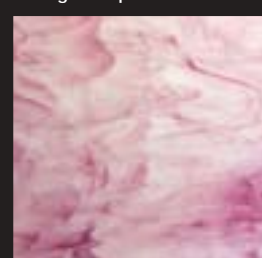
▲ 250-72S
Red



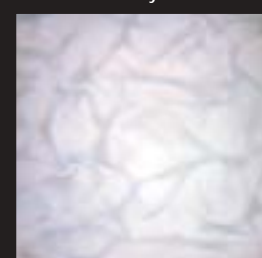
▲ 315-1G
Light Amber (granite)



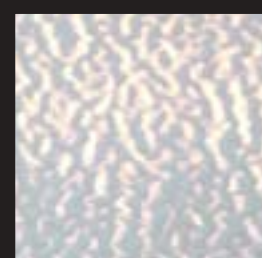
▲ 315-6S
Dark Amber



▲ 395-1S*
Pink



▲ 209K
Opal Krinkle



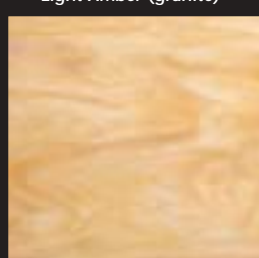
▲ 209FL
Firelight



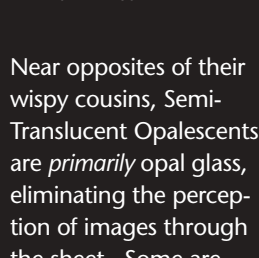
▲ 220-76S
Dark Green



▲ 260-72S
Yellow



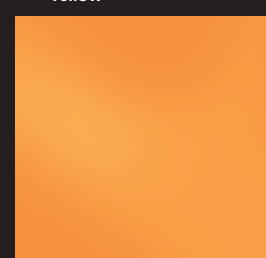
▲ 315-1S
Light Amber



▲ 315-2S
Medium Amber

Near opposites of their wispy cousins, Semi-Translucent Opalescents are *primarily* opal glass, eliminating the perception of images through the sheet. Some are variegated mixes, others are *opalized* solid colors. Because of their relative opacity, these glasses are highly reflective in nature. With backlighting, natural or artificial, they reveal a captivating, luminescent glow.

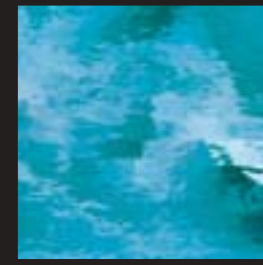
Semi Translucent Opalescent



▲ 270-72S
Orange



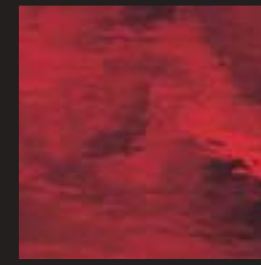
▲ 1009W* Black



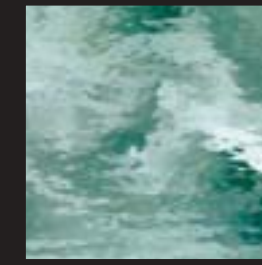
▲ 533-1W Sky Blue



▲ 543-2W Grape



▲ 151W Cherry Red



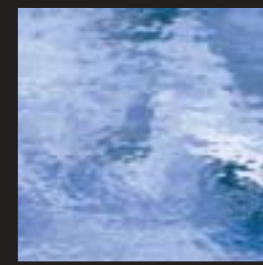
▲ 528-1W Sea Green



▲ 200-91W* White



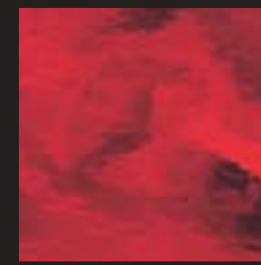
▲ 100W* Clear



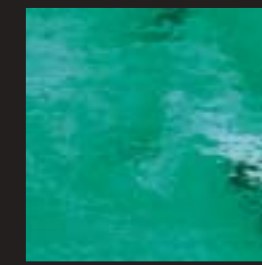
▲ 130.8W Pale Blue



▲ 140.8W Pale Purple



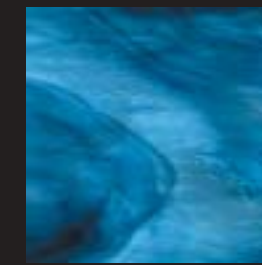
▲ 152W Ruby Red



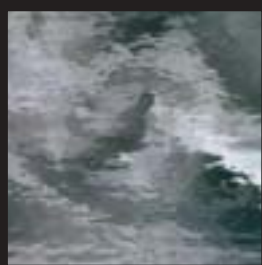
▲ 523-2W Teal Green



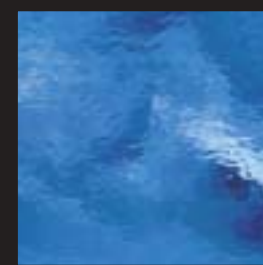
▲ 291-91W Soft Champagne



▲ 433-1W Sky Blue/Deep Steel



▲ 180.8W Pale Gray



▲ 132W Light Blue



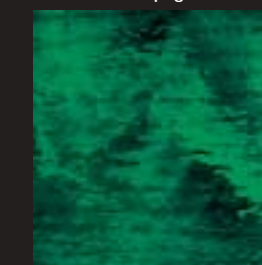
▲ 142W Light Purple



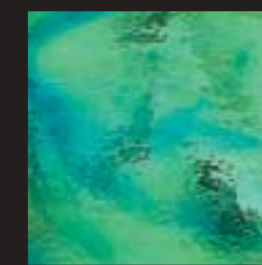
▲ 161W Yellow



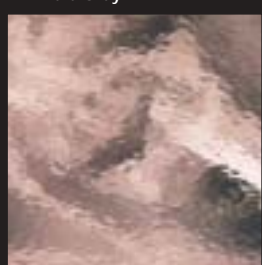
▲ 121W Light Green



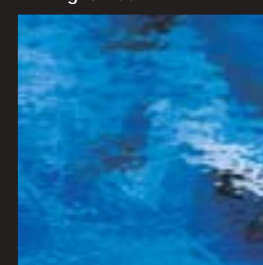
▲ 523-8W Hunter Green



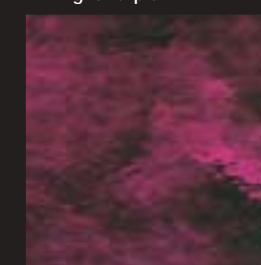
▲ 423-1W Pale Green/Aqua Blue



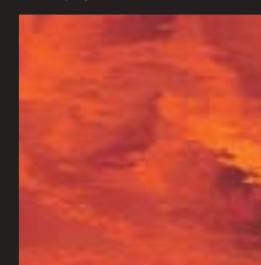
▲ 591-1W Champagne



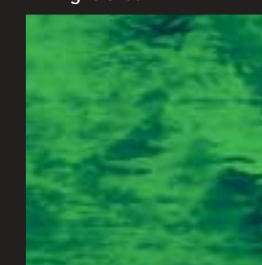
▲ 134W Medium Blue



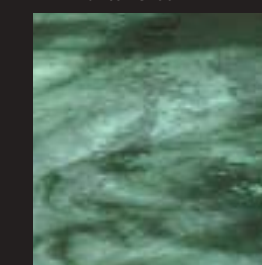
▲ 146W Dark Purple



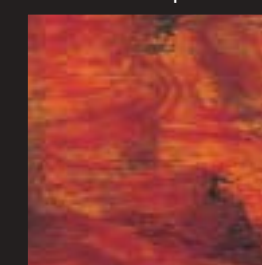
▲ 171W Light Orange



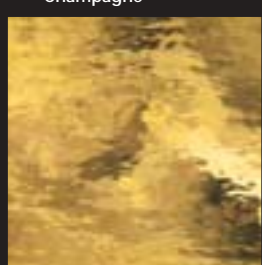
▲ 123W Medium Green



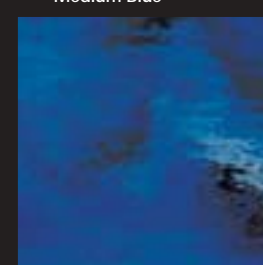
▲ 422-1W Sea Green/Deep Olive



▲ 451-20W Ruby Red/Amber



▲ 110.2W Pale Amber



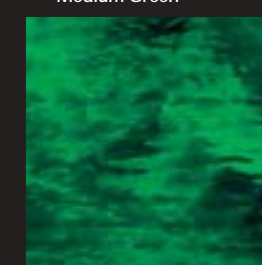
▲ 136W Cobalt Blue



▲ 146W Dark Purple



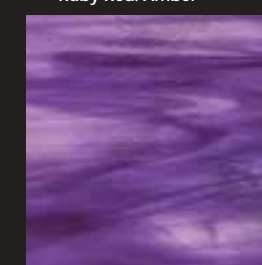
▲ 171W Light Orange



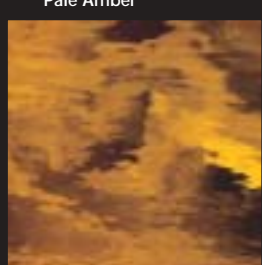
▲ 125W* Emerald



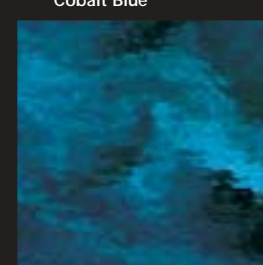
▲ 422-1W Sea Green/Deep Olive



▲ 444-1W Pale Purple/Deep Violet



▲ 110.8W Medium Amber



▲ 538-4W Steel Blue

Spectrum Waterglass® is a *natural* surface texture created by stretching the hot glass sheet while it is still in a pliable state. The result is gentle, rolling waves that resemble the surface of a lake or stream. The stretching process also renders a highly pristine surface and a slightly narrower sheet.

Though many imitators have tried, mechanically-rolled patterns simply can not approach the subtle, delicate nature of the true Waterglass texture.

Waterglass®



▲ 533-1A Sky Blue



▲ 140.8A Pale Purple



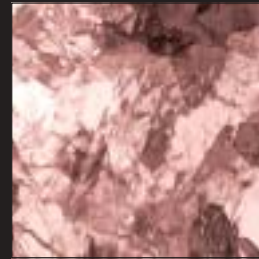
▲ 110.2A Pale Amber



▲ 528-1A Sea Green



▲ 130.8A Pale Blue



▲ 591-1A Champagne



▲ 110.8A Medium Amber



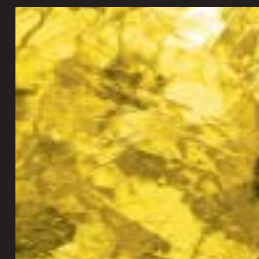
▲ 523-2A Teal Green



▲ 538-4A Steel Blue



▲ 142A Light Purple



▲ 161A Yellow



▲ 121A Light Green



▲ 132A Light Blue



▲ 100A Clear



▲ 171A Light Orange



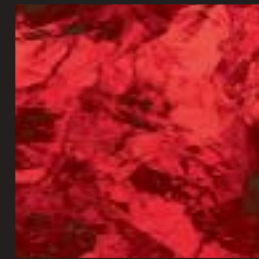
▲ 123A Medium Green



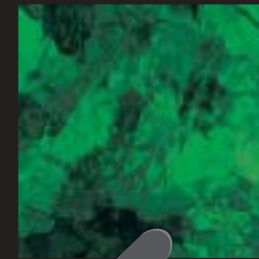
▲ 136A Cobalt Blue



▲ 180.8A Pale Gray



▲ 152A Ruby Red



▲ 125A Emerald



▲ 543-2A Grape

Artique®

Artique® is a re-creation of the spirit and character of mouthblown antique glass. The texture is *scribed* into the glass surface while the sheet is still extremely hot and pliable. The characteristic striations are active from every perspective, evident and unmistakable, even in small cut pieces.

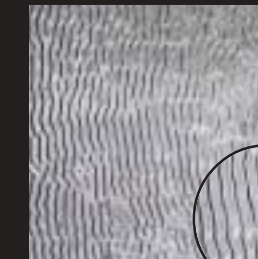
Artique unites brilliant surface characteristics, delicate light refraction and subtle but definite background distortion – all the qualities that have made mouthblown antique glass so desirable.



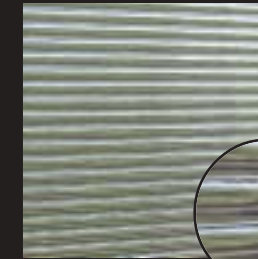
▲ 100SN* Satin



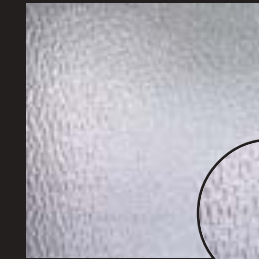
▲ 100C* Chord



▲ 100R* Ripple



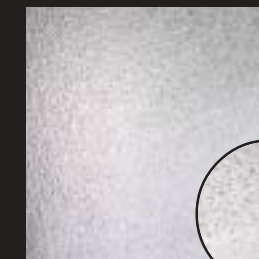
▲ 100QR* Quarter-Reed



▲ 100G* Granite



▲ 100V Vecchio



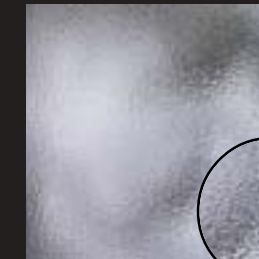
▲ 100GG* Ice Crystal



▲ 100K* Krinkle



▲ 100H* Hammered



▲ 100HS Small Hammered



▲ 100SEEDY* Seedy

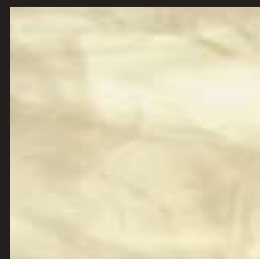
Texture is the personality of art glass, suggesting dimension, depth and contrast. In clear glass, texture is also useful for achieving varying degrees of privacy, while adding elegance and richness to living and working environments.

Spectrum's assortment of Clear Textures ranges from quite transparent to very obscure, and offers a unique selection of character and pattern from which to choose.

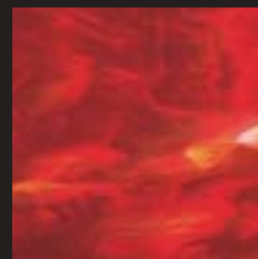
CLEAR Textures



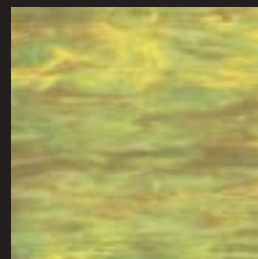
▲ 307S*
Clear



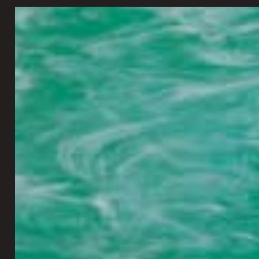
▲ 201-61S
Ivory



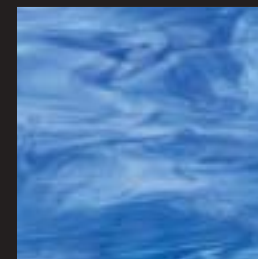
▲ 357-1S
Cherry Red



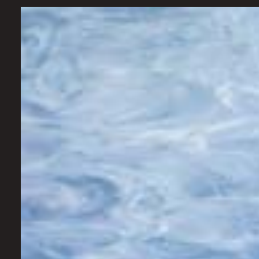
▲ 621-7S
Lime / Amber



▲ 823-72S
Teal Green



▲ 633-7S
Sky Blue / Cobalt Blue



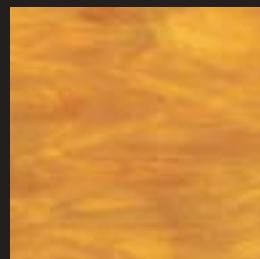
▲ 838-72S
Colonial Blue



▲ 347-1S
Pale Purple



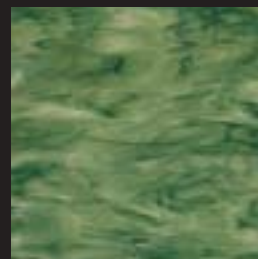
▲ 308S
Clear+



▲ 318-05S
Light Amber



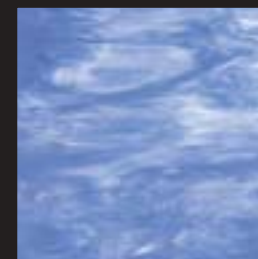
▲ 367-1S
Yellow



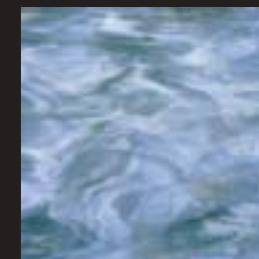
▲ 622-7S
Lime / Forest Green



▲ 826-71S
Lime Green



▲ 337-1S*
Pale Blue



▲ 838-74S
Steel Blue



▲ 843-71S
Lavender



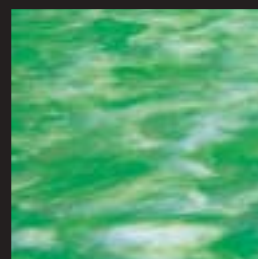
▲ 317-02S*
Pale Amber



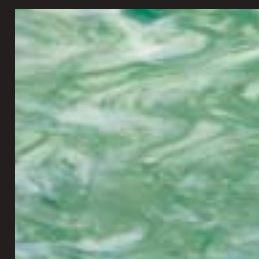
▲ 411-15S
Chocolate / Gold

The translucent Opals are about 50-50 cathedral color and white opal glass. The larger proportion of opaque white reduces light transmission and increases surface reflection.

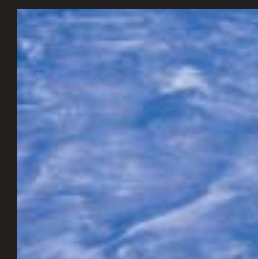
Some translucents involve multiple cathedral colors with white, and others use colored opals to achieve their individual character.



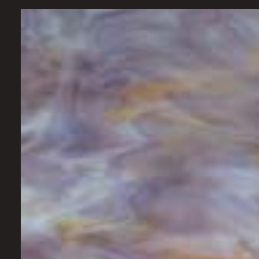
▲ 327-2S
Light Green



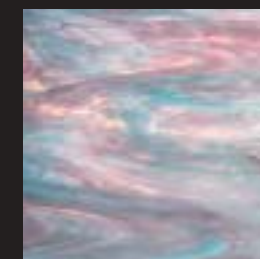
▲ 828-72S
Sea Green



▲ 337-2S
Light Blue



▲ 641-7S
Light Purple / Amber



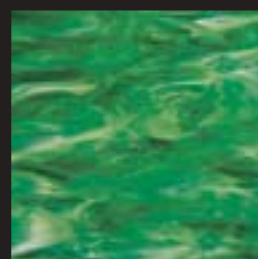
▲ 6034-83CC
Aqua-Rose



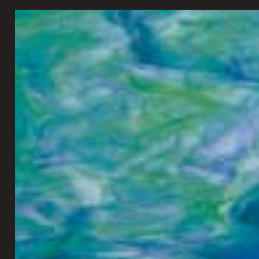
▲ 317-1S
Light Amber



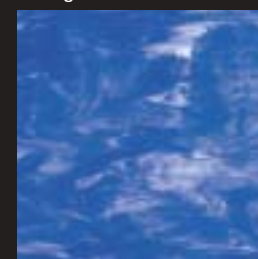
▲ 411-15G
Chocolate / Gold (granite)



▲ 327-6S
Emerald



▲ 623-7S
Emerald / Cobalt Blue



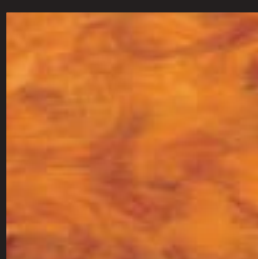
▲ 337-6S
Dark Blue



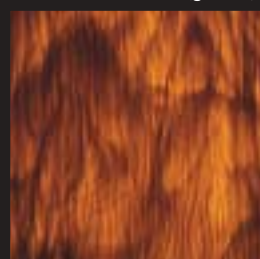
▲ 387-2S*
Medium Gray



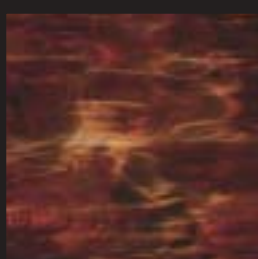
▲ 6024-84CC
Teal-Rose



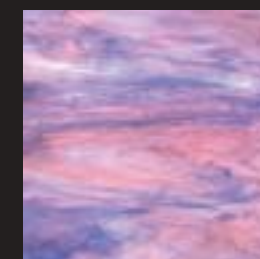
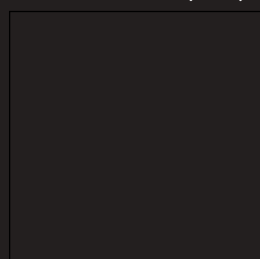
▲ 317-2S
Medium Amber



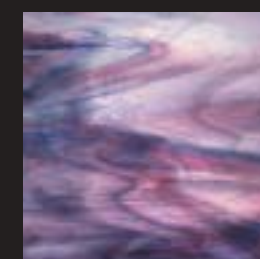
▲ 411-15C
Chocolate / Gold (chord)



▲ 317-6S
Dark Amber



▲ 6034-86CC
Cobalt-Rose



▲ 6093-86CC
Indigo-Pink

Opalescent *Translucent*



▲ 121RR†
Light Green



▲ 591-1RR
Champagne



▲ 533-1RR†
Sky Blue



▲ 161RR†
Yellow



▲ 100RR
Clear



▲ 110.2RR†
Pale Amber



▲ 123RR†
Medium Green



▲ 140.8RR
Pale Purple



▲ 130.8RR†
Pale Blue



▲ 171RR†
Light Orange



▲ 180.8RR
Pale Gray



▲ 110.8RR
Medium Amber



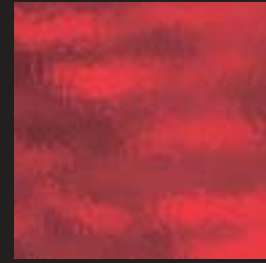
▲ 125RR†
Emerald



▲ 142RR†
Light Purple



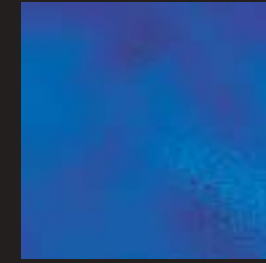
▲ 132RR
Light Blue



▲ 151RR†
Cherry red



▲ 528-1RR
Sea Green



▲ 134H†
Medium Blue Hammered



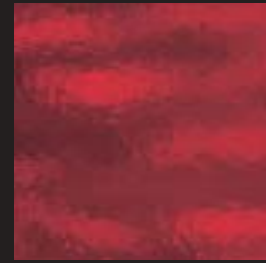
▲ 523-8RR
Hunter Green



▲ 146RR
Dark Purple



▲ 136RR†
Cobalt Blue



▲ 152RR†
Ruby Red



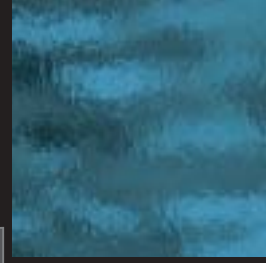
▲ 523-2RR
Teal Green



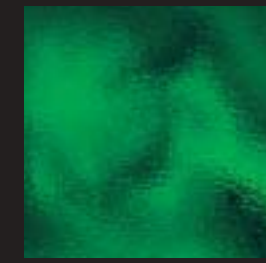
▲ 134RR†
Medium Blue



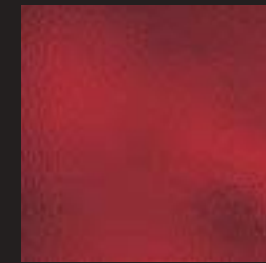
▲ 543-2RR
Grape



▲ 538-4RR
Steel Blue



▲ 152G
Ruby Red Granite



▲ 123H
Medium Green Hammered

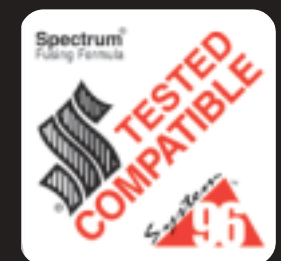
◀ Cathedrals are single color glasses, with very slight, irregular surface texture. Degree of light transmission is directly related to density of color; clear glass is highly transparent, dark colors are very opaque.

Spectrum "Rough Rolled" cathedrals (RR) have a subtle, delicate texturing that gently mutes transmitted light and images. It's the look of a naturally "chilled" glass surface, like table-rolled glasses of years gone by.

† indicates color is also available with a "smooth" (S) surface texture.



Spectrum "Tested Compatible" products serve as the core of a complete Hot-Glass program called System 96®. More than 35 cathedral and solid-opal Spectrum colors have now been *Expansion-Matched* to a nominal "96" C.O.E., then factory-tested for fusing compatibility. Each glass has been carefully formulated for *Multi-Fire* devit resistance, and every sheet is clearly marked with a Spectrum "Tested Compatible" label. Spectrum Partners in the System 96 program include *Uroboros Glass Studios* and *Coatings by Sandberg*, who together provide a full line of complementary frit, noodle, stringer, specialty sheet glass and dazzling dichroics. All products in the line carry the red System 96 label and have been "Tested Compatible" to Spectrum Master samples. Ask for more information on the System 96 family of Hot-Glass products.



Cathedral